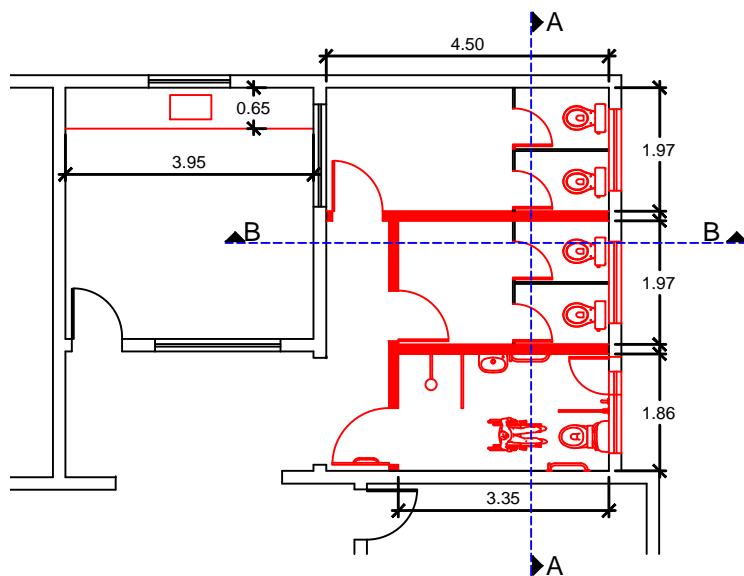


**PLANTA BAIXA**

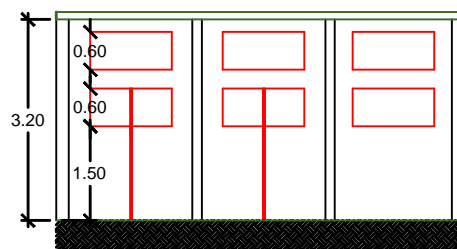
Escala 1/200

----- À DEMOLIR  
 ————— À CONSTRUIR



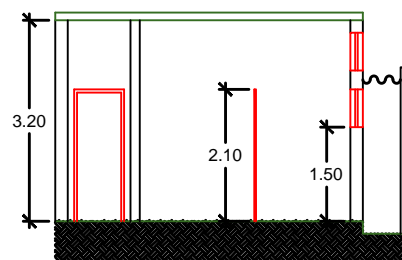
**PLANTA SANITÁRIOS**

Escala 1/100



**CORTE AA**

ESC 1:100



**CORTE BB**

ESC 1:100

Prefeitura Municipal de Bernardino de Campos  
 CENTRO EDUCACIONAL - REFORMA DE SANITÁRIO  
 Praça da Bandeira nº303 - Centro - Bernardino de Campos SP

Prefeitura Municipal de Bernardino de Campos  
 Armando José Pires Beleze - Prefeito Municipal

Roberto Correa de Moraes  
 Eng. Civil CREA 5060456883 SP