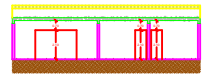


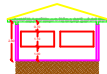
CORTE A - A
Esc. 1:200



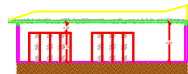
CORTE B - B
Esc. 1:200



CORTE C - C
Esc. 1:200



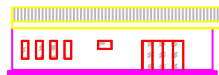
CORTE D - D
Esc. 1:200



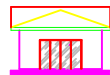
CORTE E - E
Esc. 1:200



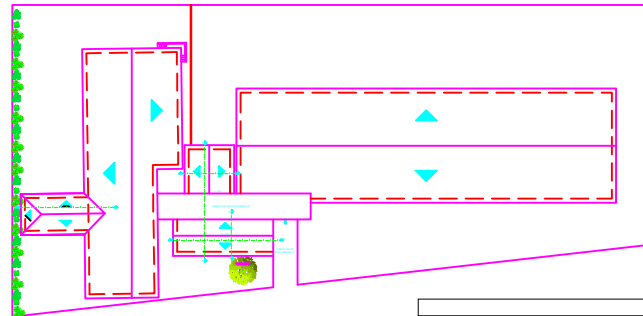
FACHADA
Esc. 1:200



FACHADA
Esc. 1:200



FACHADA (Sua Lateral)
Esc. 1:200



COBERTURA
Esc. 1:400



PREFEITURA MUNICIPAL DE BERNARDINO DE CAMPOS

REFORMA CRECHE E ESCOLA

Local:
Rua: Maranhão, nº 251 e 301
Jardim Brasil II

Município:
Bernardino de Campos - SP

Interessado:
Prefeitura Municipal de Bernardino de Campos

CNPJ:
44.563.591/0001-80

Prefeito:
Armando José Pires Beleze

ART

Prefeitura Municipal de Bernardino de Campos
Armando José Pires Beleze - Prefeito Municipal

Roberto Correa de Moraes
Eng. Civil CREA 5060456883 SP

DATA: **FEVEREIRO / 2014** Bernardino de Campos

ESCALA: INDICADA